



34th South Australian State Conference

28 to 30 March 2012

Proudly presented by the
Cities of Playford, Salisbury and Tea Tree Gully



ENVIRONMENTAL
HEALTH
AUSTRALIA

(South Australia) Incorporated

Conference Convenor



On behalf of this year's State Conference Committee and Environmental Health (South Australia) Incorporated, I have much pleasure in inviting you to attend the 34th Environmental Health Australia State Conference to be co-hosted by the Cities of Playford, Salisbury and Tea Tree Gully.

This year's theme "Environmental Health: So Much More Than You Think" will look at how the new challenges we face will blend with our existing traditional role. A fantastic program has been developed by the Committee with a variety of speakers addressing such

issues as the implementation of the new Public Health Act, various speakers from State Government and presentations from Local Government Environmental Health Officers and legal practitioners.

Social functions include a welcome barbecue and a conference dinner where you will have opportunities to meet delegates, expand your networks, engage with sponsors and most importantly "step back in time"!

I look forward to seeing you there.

Amedeo Fioravanti
Conference Convenor

Venue



Playford Civic Centre

The Playford Civic Centre incorporates the councils Civic Chambers, councils main customer service centre and library. The Centre also contains a multi-purpose Function Centre and meeting room spaces as well as the 47 year old revamped Shedley Theatre.

The Great Hall is the centrally located foyer space that accesses all parts of the venue and is a great space for local

artists to display their works as well as information areas for the public about what is going on around the area, the Civic Centre has a strong event track record, having hosted everything from corporate training seminars, meetings, fashion parades and wedding receptions as well as being the venue for a caucus sitting of the federal government.

Welcome barbecue



The Watershed

Environmental Health Australia and the Conference Committee would like to invite delegates to a complimentary informal welcome barbecue, commencing from 6pm on 28 March 2012 at The Watershed - 665 Salisbury Highway, Mawson Lakes.

With open sky views of the Adelaide Hills and overlooking the Greenfields wetlands The Watershed boasts a truly unique and appealing setting. Away from the inner city hustle and bustle you will enjoy the natural surroundings and great food on offer.

Dinner



Warm up your crimper, pump up your shoulder pads, get your skates on.
We're going

BACK TO THE 80s

This year's conference dinner will be held at Sfera's Park Suites and Convention Centre located in the City of Tea Tree Gully on Thursday 29 March from 6pm. This year's theme will be an 80s night. A prize will be given to the best dressed, so bring out the fluro's and get ready for a fun night!

Free bus transfer to and from dinner is available from Mawson Lakes, registration required.

Keynote Speaker

Dr Stephen Christley is Chief Public Health Officer and Executive Director of Public Health and Clinical Systems in the South Australian Department of Health. He oversees Public Health, Emergency Management, Communicable Disease Control, Safety and Quality, Pharmaceutical Services and Health Promotion within the Department. He led and managed the SA response to the H1N1 pandemic in 2009.

Stephen studied Medicine at the University of Sydney and went on to complete further studies in Public Health in 1996, also at Sydney University. He has worked as a medical practitioner and manager in rural, public health and community settings.

Before joining SA Health in 2008, he was the chief executive officer of three

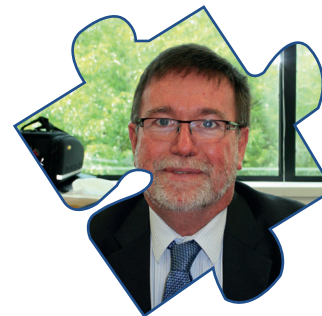
different area health services in New South Wales over twelve years.

Stephen is the South Australian representative on Australian Health Protection Committee, which oversees the national response to public health emergencies communicable disease threats and environmental threats to public health. He is also on the National Blood Authority Board, and is a member of the Clinical, Technical and Ethical principal committee of the Australian Health Ministers Advisory Committee.

As Chief Public Health Officer Dr Christley will be presiding member for the SA Public Health Council when established.

Dr Christley's interests are public health, health system improvement, and safety and quality.

Dr Stephen Christley



Guest Speakers

Dr Chris Lease is the Director of Health Protection at the Department of Health. His qualifications include a Bachelor of Applied Science (Environmental Health) and a PhD in environmental biotechnology both from Flinders University.

Before joining the Department of Health, Chris was involved in lecturing and research in health and environment related fields at Flinders University. He has extensive experience in working in Local Government in environmental health and regulatory/community services management and policy analysis and development through employment with South Australia's

peak representative body for Local Government, the Local Government Association. He has also worked as a private environmental management consultant assisting government and the private sector in the field of environmental and waste management.

Chris is the South Australian representative on eHealth (the National Environmental Health Committee) and chairs its Workforce Working Group.

Chris has a long standing interest in improving health management, particularly workforce issues and the transitioning of sanitary based practice to also deal with the causes of chronic disease.

Dr Chris Lease



Colin Eves is the founder and creator of the High Performance Master Class, a training program that helps others to do and become far more than what they're currently accepting. He is also the author of the soon to be published book *The Art of Self-Delusion – How to Create Anything Out of Nothing at All*.

Colin is a member of National Speakers, the Association of Personal Growth Professionals, and the International Positive Psychology Association. He also holds a Social Science degree from the University of Sydney and is a natural personal fitness trainer.

Colin Eves



Conference Program



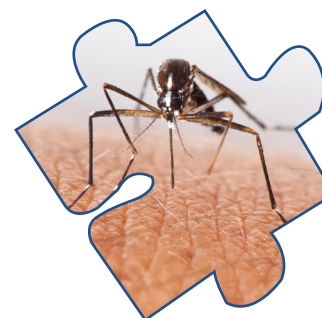
Day 1 – Thursday 29 March

- 8.30am Registration
- 9.00am **Welcome**
City of Playford Mayor Docherty and EHA President, Susan Bennett
- 9.15am **Keynote address**
Public Health in South Australia – Building the 21st Century
Dr Stephen Christley, Chief Public Health Officer & Executive Director
Public Health & Clinical Systems
- 9.45am **Collaborative Health Impact Assessment of Transit Oriented Development**
Dr Chris Lease, SA Health
- 10.15am Morning tea
- 10.30am **Food Safety Rating Program 'Recognising Excellence in Food Safety' at the City of Salisbury**
James Story, City of Salisbury
- 11.00am **Food – A Year of Enforcement**
Paul Kelly, Norman Waterhouse Lawyers
- 11.30am **Understanding Mental Health Issues**
Neil Mauriello and Elvira Kovacs, Adelaide Northern Division of General Practice
- noon Lunch
- 12.45pm **Applying the General Duty under the new Public Health Act (2011)**
Danny Broderick, SA Health
Cimon Burke, Wallmans Lawyers
- Applying the General Duty Workshop**
Danny Broderick, Ian Hawkins and Dr Chris Reynolds, SA Health
- 3.00pm Afternoon tea
- 3.15pm **EPA/Local Government Strategy**
Keith Billsborough, EPA
- 3.30pm **Talk Trash with the new SA EPA Illegal Dumping Unit**
Tony Williams, EPA
- 4.00pm Day close
- 6.00pm **Conference dinner**
Sfera's Park Suites and Convention Centre
191 Reservoir Road, Modbury

Day 2 – Friday 30 March

- 8.30am Registration
- 8.55am **Welcome**
Amo Fioravanti, City of Playford, Conference Convenor
- 9.00am **EHO Workforce Attraction and Retention Review**
Courtney Bartosak, City of Playford
- 9.20am **Harvesting Stormwater in the North**
Bruce Naumann, City of Salisbury
- 9.50am **Hoarding – A Difficult Case**
Dale Mazzachi, Norman Waterhouse Lawyers
- 10.20am **When hoarding is more than a nuisance**
Andrew Nesbitt, City of Playford
- 10.30am Morning Tea
- 10.45am **Concurrent Sessions**
- | | |
|---|--|
| Battling the Biters – Mosquitoes
Katina Nikas, Renmark Paringa Council and Rebecca Burton, Berri Barmera Council
SA Health, Health Protection Branch
Michaela Hobby & Nick Baker
SA Health CDCB, Deidre Russo
Dr Craig Williams, Uni SA, Senior Lecturer in Biological Science
Question time | Commercial Wastewater Management
Tim Woods, Hydroscape
Lucid Consulting Engineers |
|---|--|
- 11.45am **Developing Public Health Planning Processes – Progress Report on a joint LGA/SA Health Project**
Danny Broderick, SA Health
Pilot Councils and Consultants
- 12.45pm Lunch
- 1.30pm **The remarkable secrets that automatically motivates teams and staff to do great work all the time**
Colin Eves, High Performance Master Class
- 2.00pm **The Food Act MOU and U – A Collaborative Approach towards Consistency and Enforcement**
- 3.30pm Afternoon tea
- 3.45pm **An Unusual Suspect (Legionella)**
James Walker, City of Tea Tree Gully
- 4.15pm Closure of conference
EHA President, Susan Bennett

Note: Conference program subject to change without notice.



Accommodation



Accommodation is to be arranged by the individual.

A limited number of rooms have been put on hold at the accommodation venues listed below. When booking please advise that you are booking from the "EHA Conference group block" to receive the prices quoted below.

Note: The special rates provided in this flyer will expire as indicated below. A limited number of rooms have been put on hold so first in first served. Individuals booking accommodation should discuss the booking conditions with the accommodation venue at the time of booking.

Sfera's Park Suites and Convention Centre

191 Reservoir Road, Modbury, phone 8397 8600

Sfera's Park Suites and Convention Centre offers three distinctive styles of chic, deluxe accommodation in 20 luxurious spa suites.

Premium suite \$115 per night
Premier spa suite \$139 per night
Deluxe spa suite \$175 per night

www.sferas.com

Mawson Lakes Hotel

10 Main Street, Mawson Lakes, phone 08 8360 3500

The Mawson Lakes Hotel features 112 spacious accommodation rooms, apartments and suites to suit any circumstance. Offering everything for business and leisure, come and see for

yourself why our superior service makes Mawson Lakes the perfect choice.

Rooms starting from \$159 per night (special rate expires 12 March 2012).

www.mawsonlakeshotel.com.au

Quest Mawson Lakes

33-37 Main Street, Mawson Lakes, phone 08 7071 0100

Situated just 12km's north of the city of Adelaide, Mawson Lakes encompasses serene lakes and landscaped parks alongside an energetic mix of recreation, retail, education & commercial facilities. Opened in September 2009, Quest Mawson Lakes features 66 stylish and spacious studio rooms and fully self-contained 1, 2 and 3 bedroom apartments. For your convenience and peace of mind, secure

on-site car parking is available at no extra charge. Quest Mawson Lakes is your complete serviced apartment accommodation solution.

Rooms starting from \$142 per night (special rate expires 6 March 2012).

www.questapartments.com.au/Accommodation/128/Australia/Adelaide_Suburbs/Quest_Mawson_Lakes/Welcome.aspx

Transport

The Conference committee is pleased to provide a free bus service for all delegates attending the conference dinner on Thursday 29th March 2012. The bus will collect delegates from the Quest Apartments at approximately 5.10pm and at the Mawson Lakes Hotel at approximately 5.20pm. The bus will return and collect delegates at approximately 11.45pm from Sferas on the Park to the Mawson Lakes Hotel and Quest Apartments.



THE WATERSHED FUNCTION CENTRE & CAFE
665 Salisbury Highway
MAWSON LAKES SA 5095

Parking is available onsite



PLAYFORD CIVIC CENTRE
10 Playford Boulevard
ELIZABETH SA 5112

Parking is available at the Civic Centre or across the road at the Elizabeth Shopping Centre.

Please be aware that there is permit parking at the Civic Centre which is for City of Playford staff members only



SFERA'S PARK SUITES & CONVENTION CENTRE
191 Reservoir Road
MODBURY SA 5092

Complimentary Parking Onsite

Sponsors

Platinum



Government
of South Australia

SA Health

Silver

Norman
Waterhouse
LAWYERS



General

Supported by

